

Maranatha II

The Xingu River, for which our mission is named, is our North-South axis of operation. The river, plus its tributaries, encompasses thousands of miles of waterways. South of Altamira, there has never been any intentional effort to plant churches in any of the rivers or their tributaries. One key tool that has helped us have success over the last several years has been our boat ministry.

The cornerstone of that ministry is our largest boat, the Maranatha 2. The Maranatha 2 has a capacity of 45 people. However it has a wooden hull that is more than 25 years old and the boat is in need of a complete refitting. The current cost estimate is \$36,500 to complete this job. This is significantly less than buying a new boat and this investment would provide another 20 years of useful life for the boat. We consider this an excellent return on the investment in the kingdom of God. How is this boat used currently in the ministry? It is used in the local churches for taking teams of Brazilians for outreaches, to do leadership training and to take missionary teams along the river.

The boat is a powerful tool for the mission and the churches to move along the waterways and help bring the Gospel to the region. And just as exciting is to see that the local churches use it for work in the interior. One recent story is how it was used for a student training in a small village. It was able to meet the dual purpose of training the Brazilian church to have a passion for their own people in the interior and equipping them to do the work of reaching out to them also. Moments like this signal that God is using this tool in an effective way in his Kingdom work.

Please pray about supporting the following Altamira Base Fund projects.

Maribel Ministry Fund	\$6,000	Church Planting Fund	\$50,000
Uruará Ministry Fund	\$12,000	Maranatha II Boat Repairs	\$36,500
Pacajá / Anapu Phase 1	\$18,000		

Bergen : Rick.Bergen@xingu.org
Phone Rick : 011-55-94-3012-0111
Bergquist: Bergquistclan@xingu.org
Bouthillier: Transamazon@xingu.org
Phone Richie : 011-55-93-3793-1170
Dolan: Steve.Dolan@xingu.org
Duplaga: Angie.Duplaga@xingu.org
Fultz: Patty.Fultz@xingu.org

Kubacki : Kubacki6@msn.com
Newton: Chelsea.Newton@xingu.org
Price: Terry.Price@xingu.org
Rae: Art.Rae@xingu.org
Simon: Bud.Simon@xingu.org
Phone Bud : 011-55-93-3515-2217
Stevenson: Jim.Stevenson@xingu.org
Wilsons: Keith.Wilson@xingu.org

Donation in USA
Xingu Mission - PO Box 340785
Columbus, Ohio 43234

Donation in Canada
Xtreme Mercy - # 3 - 8979 Broadway
Chilliwack, BC V2P 5V9



Xingu Mission

Field Report



Xingu MISSION

Xtreme Mercy
Planting Churches and
Training Leaders

Realizing a Dream

The Altamira Base is realizing a dream. The dream has been for the mission to build a self-sustaining, self-governing, and self-supporting church planting movement. Each day we see this become more and more of a reality. Our vision is to walk alongside, building relationship and empowering the church to move ahead in the work that God has called them to do.

Over the past couple of years there has been a heart for regional expansion, especially along the TransAmazon Highway. This is the East-West axis of our field of operation. Although the road has the name “ Highway” attached to it, the reality is that it is a simple two lane mud road. But, along that road are many towns that have populations ranging from

20,000 to 70,000 people. And each of these towns has dozens, and sometimes hundreds, of villages and communities that relate to them as a center for finance, health, and education. As such, they provide strategic points for reaching out and touching the spiritual life of these simple people.

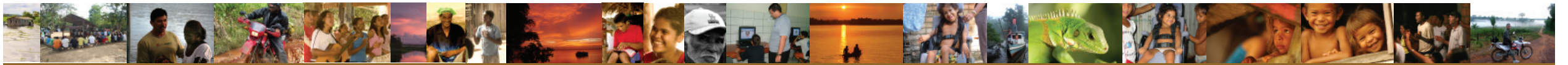
We have started churches in five of these towns in recent years. In partnering with the churches, we can accelerate the growth and expansion by providing capital, prayer, logistical, and training support. All of these dovetail together to meet in a place that can provide for exciting growth. As you read the following stories, open your heart to how God can help you partner with us to realize this dream.



The Transamazon Highway



FIEL outing on the Maranatha II



Uruará and Maribel

Uruará sits on the TransAmazon Highway about 180 miles SW of Altamira. A new work began this January with a Brazilian couple, Poli and Nega, and missionaries Clyde and Kelsie Bergquist, and their families. The Xingu Mission received land in the city from a Brazilian friend that made it



Poli and Nega and family

possible to forge ahead with a church plant. Poli and Nega went excited about starting the work right away. Within the first week of being in Uruará, the Lord made it clear that He was orchestrating help to make it successful. Currently there are 5 nights full of small group meetings for kids and adults and a Sunday service. The goal for this year is to build on the property a mission apartment for 2 families to live and a large carport for a meeting area for church and events. We need \$12,000 to make this a reality. The Bergquists are in Uruará to help kick start the work during the rainy season. In June/

July they will move to the Iriri river which is another 3 hours by car on a rough road. The road ends at the bank of the river in a small community of 5 houses called Maribel. They moved there in September of 2010 and began ministry to the river folks where there are no churches. There are many villages up and down the Iriri river waiting for the gospel to come. Audio bibles have been a huge blessing to this region and many folks are catching word that if they are illiterate, the missionaries will give them a talking bible. The work is expanding day by day along the river. We need \$6,000 to help move this work forward.



Preparing to start to build church in Uruará

Anapu and Pacajá

Through Altamira's Mirante neighborhood church, the Wilsons have been helping plant an interior church near the City of Anapu. Through this church plant they started getting a vision for reaching the cities and homesteading communities

east of Altamira. The distance from Altamira and unpaved roads make it impractical to reach these communities based out of Altamira. The Wilsons have been praying about the Cities of Anapú and Pacajá for some time. In late 2009, together with Altamira's Colina neighborhood church, they started a house church in Anapú. Since then that home church has developed a core group of believers and now has a Brazilian



Home group in Anapu

leader. Through a monthly meeting of believers from three local communities, the believers around Anapu are becoming united in the vision of starting a church in Anapu. They are starting to see themselves as the church leaders, rather



Home group in Anapu

than wait for someone to come from Altamira to be their leader. This is an exciting step of maturity and vision. The Altamira leadership is now looking to Pacajá, a city 1 ½ hours east of Anapu, to be the location of a church planting base to further reach and oversee church planting work in the region east of Altamira. Some church property has been purchased in Pacajá, and the Mirante church is releasing the Wilsons to invest in Pacajá upon their return from furlough in Fall 2011. Please, pray that the Lord will open doors and hearts in Pacajá and continue to grow the work in Anapú.

Below - Logan Wilson at the church property in Pacajá

